



Claudin 4 (ABT-CLD4) mouse mAb

Catalog No	YP-Ab-15356
Isotype	IgG
Reactivity	Human
Applications	IHC;IF
Gene Name	CLDN4 CPER CPETR1 WBSCR8
Protein Name	Claudin-4 (Clostridium perfringens enterotoxin receptor) (CPE-R) (CPE-receptor) (Williams-Beuren syndrome chromosomal region 8 protein)
Immunogen	Synthesized peptide derived from human Claudin 4
Specificity	This antibody detects endogenous levels of human Claudin 4. Heat-induced epitope retrieval (HIER) TRIS-EDTA of pH8.0 was highly recommended as antigen repair method in paraffin section
Formulation	Liquid in PBS containing 50% glycerol, 0.5% BSA and 0.02% sodium azide.
Source	Mouse, Monoclonal/IgG2b, Kappa
Purification	The antibody was affinity-purified from mouse ascites by affinity-chromatography using specific immunogen.
Dilution	IHC-p 1:100-500, WB 1:500-2000. IF 1:50-200
Concentration	1 mg/ml
Purity	≥90%
Storage Stability	-20°C/1 year
Synonyms	
Observed Band	
Cell Pathway	Cell junction, tight junction . Cell membrane ; Multi-pass membrane protein . CLDN4 is required for tight junction localization in the kidney. .
Tissue Specificity	Colon,Fetal brain,Trachea,
Function	disease:Haploinsufficiency of CLDN4 may be the cause of certain cardiovascular and musculo-skeletal abnormalities observed in Williams-Beuren syndrome (WBS), a rare developmental disorder. It is a contiguous gene deletion syndrome involving genes from chromosome band 7q11.23.,function:Plays a major role in tight junction-specific obliteration of the intercellular space.,similarity:Belongs to the claudin family.,subunit:Directly interacts with TJP1/ZO-1, TJP2/ZO-2 and TJP3/ZO-3.,
Background	The protein encoded by this intronless gene belongs to the claudin family. Claudins are integral membrane proteins that are components of the epithelial cell tight junctions, which regulate movement of solutes and ions through the paracellular space. This protein is a high-affinity receptor for Clostridium perfringens enterotoxin (CPE) and may play a role in internal organ development and function during pre- and postnatal life. This gene is deleted in Williams-Beuren syndrome, a neurodevelopmental disorder affecting multiple



systems. [provided by RefSeq, Sep 2013],

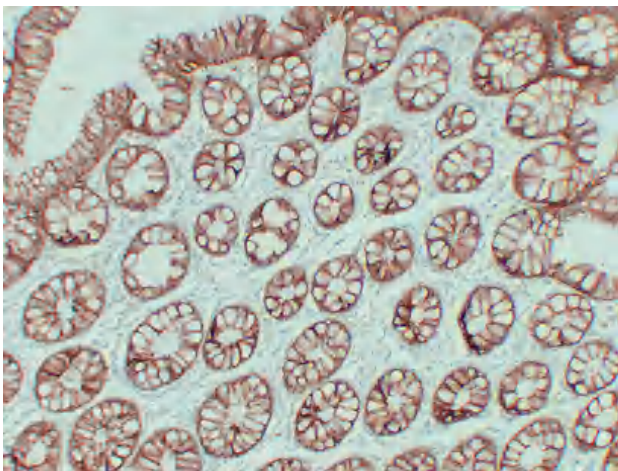
matters needing attention

Avoid repeated freezing and thawing!

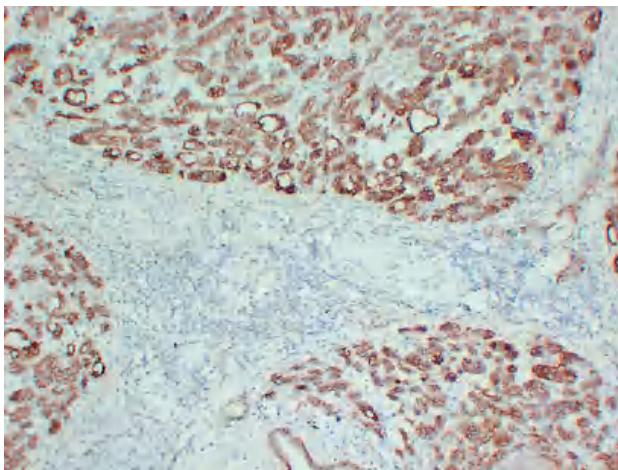
Usage suggestions

This product can be used in immunological reaction related experiments. For more information, please consult technical personnel.

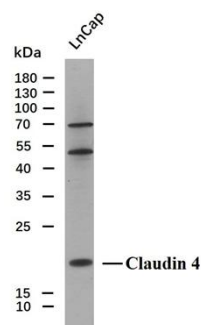
Products Images



Immunohistochemical analysis of paraffin-embedded Colon. 1, Antibody was diluted at 1:200(4° overnight). 2, TRIS-EDTA of pH8.0 was used for antigen retrieval. 3,Secondary antibody was diluted at 1:200(room temperature, 30min).



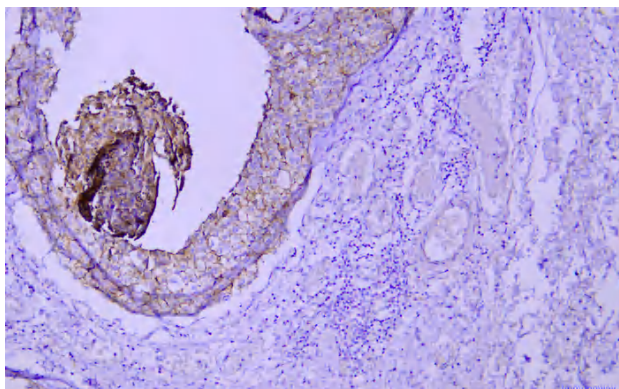
Immunohistochemical analysis of paraffin-embedded Pancreatic carcinoma. 1, Antibody was diluted at 1:200(4° overnight). 2, TRIS-EDTA of pH8.0 was used for antigen retrieval. 3,Secondary antibody was diluted at 1:200(room temperature, 30min).



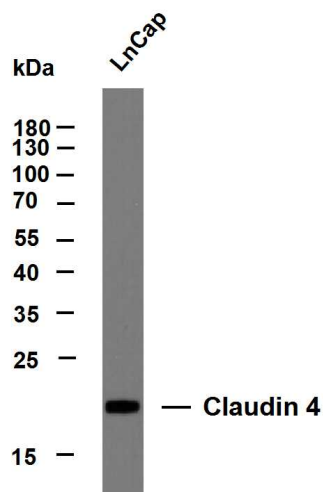
Whole cell lysates of LnCap(30ug) were separated by 12% SDS-PAGE, and the membrane was blotted with Claudin 4 antibody. The HRP-conjugated anti-Mouse IgG antibody was used to detect the antibody.

Predicted band size: 22kDa

Western blot analysis of Claudin 4Antibody at 1:1000 dilution.



Immunohistochemical analysis of paraffin-embedded human mammary cancer Antibody was diluted at 1:200(4° overnight).



Whole cell lysates were separated by 12% SDS-PAGE, and the membrane was blotted with anti-Claudin 4(ABT-CLD4) antibody. The HRP-conjugated Goat anti-Mouse IgG(H + L) antibody was used to detect the antibody. Lane 1: LnCap Predicted band size: 22kDa Observed band size: 22kDa